



# HOME AND LAND

Images shown are for illustrative purposes only and may not represent the final product such as lighting, window furnishings, timber look garage door & timber windows. Façade details including entry door and window sizing may vary between house types. Pricing also excludes features such as fencing, landscaping, letterbox, decking, driveway and any notable features of the façade. Please speak with your sales consultant for further details.

LOT 408, BAYBREEZE ESTATE, ST LEONARDS (448M2)

FLOOR PLAN: MEBBIN 25\_236  
FACADE: DAVEY

**FIXED PRICE**

**\$501,047**

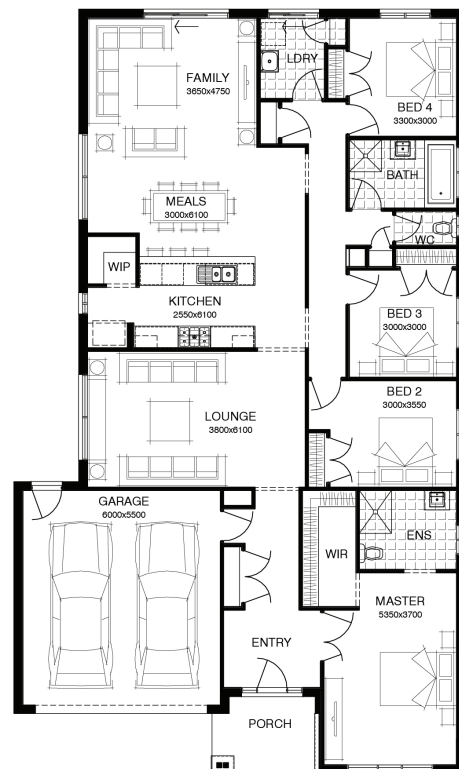
FIRST HOME OWNERS PRICE \$481,047

4 🚗 2 🍷 2 🚗 2 🚗 25sq 📏



## PACKAGE INCLUSIONS:

- ▼ LAMINATE TIMBER LOOK FLOORING TO ENTRY, KITCHEN & LIVING
- ▼ CARPET TO REMAINDER OF HOME
- ▼ 20MM CAESARSTONE BENCHTOP TO KITCHEN
- ▼ OVERHEAD CUPBOARDS TO KITCHEN
- ▼ BATHROOM ACCESSORIES
- ▼ BRICKWORK OVER WINDOWS
- ▼ UP TO 40M2 COLOUR THROUGH CONCRETE DRIVEWAY
- ▼ REMOTE TO GARAGE DOOR
- ▼ 20 DOWNLIGHTS



For enquiries please contact:

Bruno Esposti  
0435219103  
Simonds.com.au

Geelong

GEELONG VIC 3220  
bruno.esposti@simonds.com.au

